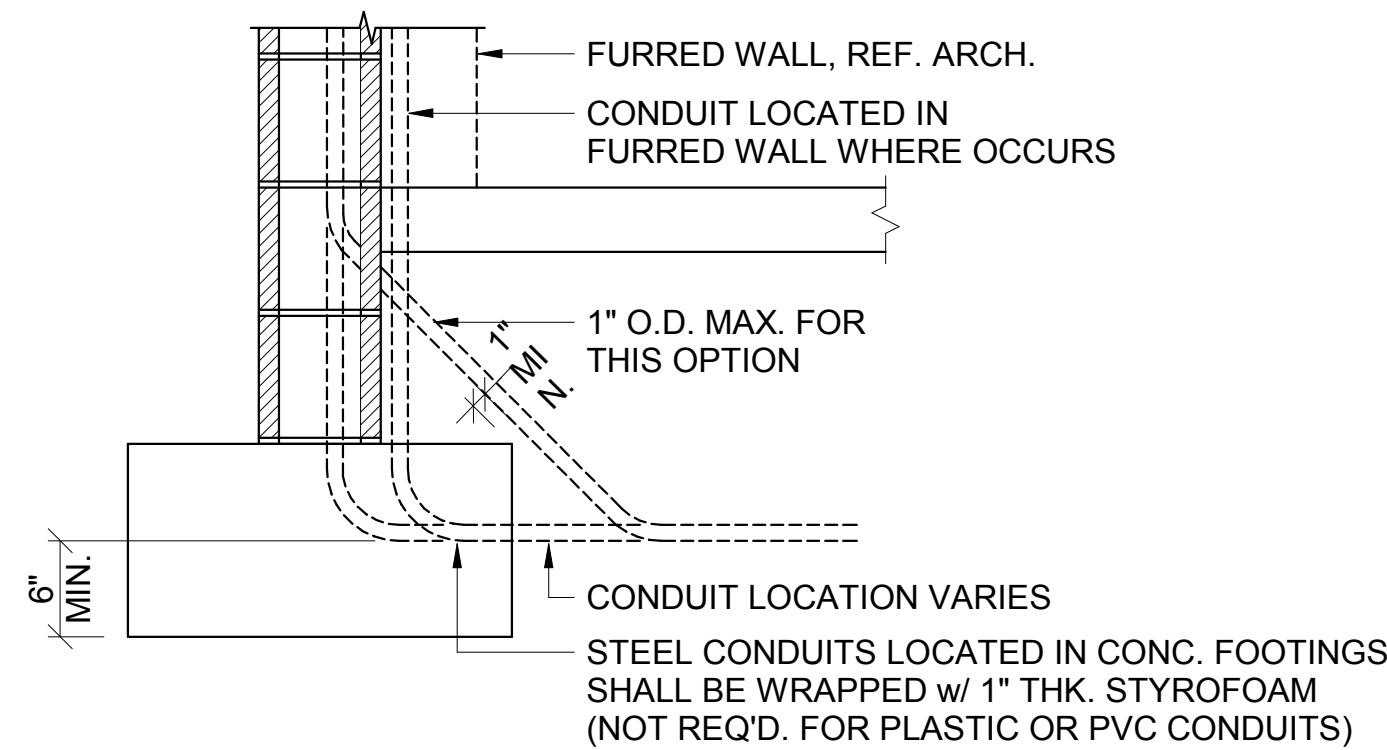


1. 1" O.D. MAX. AT 8" CMU WALLS
2. ONLY STEEL OR PVC ALUMINUM CONDUITS ARE RESTRICTED FROM USE.
3. CONDUITS SHALL NOT BE ALLOWED IN ANY OF THE FOLLOWING CONDITIONS.
  - a. ANY VERTICAL CELL CONTAINING REINFORCING.
  - b. WITHIN OR AT THE END OF ANY HORIZONTAL BAR OR CROSSINGS.
4. NO JUNCTION BOXES ARE ALLOWED WHERE VERTICAL REBARS ARE SPACED AT 8" O.C.
5. HORIZONTAL CONDUIT RUNS SHALL BE NOT EXCEED 4'-0".
6. CONDUITS SHALL NOT BE PLACED IN BOND BEAMS.
7. ALL HORIZONTAL CONDUITS SHALL BE A MINIMUM OF 6" AWAY FROM HORIZONTAL BARS.
8. STRUCTURAL ENGINEER RESERVES THE RIGHT TO MODIFY OR RESTRICT THE USE OF THESE RULES BASED ON ACTUAL FIELD CONDITIONS AND QUALITY OF EXECUTION.



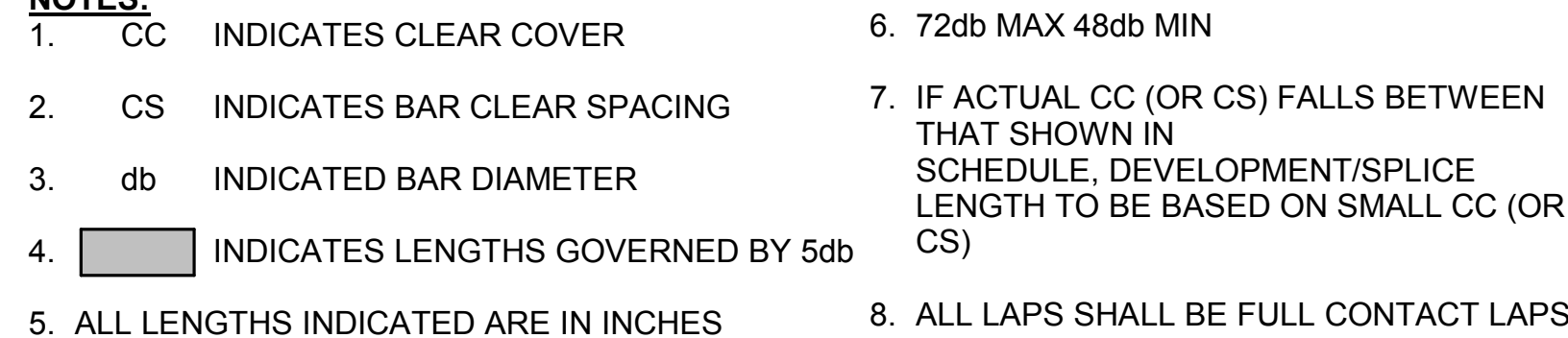
DETAIL ID:	SCALE: NTS	\$1.41
------------	------------	--------



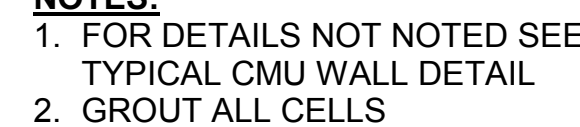
DETAIL ID:	SCALE: NTS	S141
------------	------------	------



DETAIL ID: MS-WALL-01



DETAIL ID: MS-WALL-04	SCALE: NTS	\$1.11
-----------------------	------------	--------



DETAIL ID: MS-WALL-03	SCALE: NTS	\$1.11
-----------------------	------------	--------